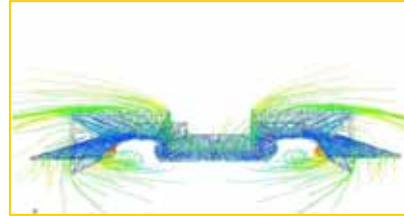
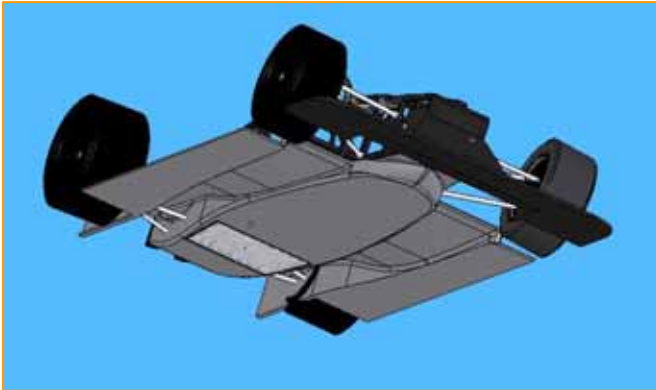


West Introduces Next Generation Tunnel Floor for SCCA & IMSA

The ultimate performance upgrade for the 2007 season is the high down force tunnel floor kit. West developed the state of the art high down force low drag floor using the latest technology in CAD, CFD, and CNC mold construction. The race proven floor provides considerable amount of additional down force while maintaining neutral handling characteristics.



As described by West engineer and development driver John Bender, "The car with this floor is absolutely amazing to drive. The



floor works exactly as it was engineered to do. The car has considerably more overall grip, it is less pitch sensitive and has less under steer due to the change in center of pressure, resulting in a well balanced car. This is a whole new level of sportsracer performance."



The Tunnel floor kit includes:

- Lightweight vacuum bagged/oven cured e-glass floor with epoxy paint - 34 lbs.
- High tensile strength support system
- Aero control arms
- ZX10 plumbing modifications
- Revised rear pushrods
- Radiator and oil cooler ducts optimized for tunnel design
- Additional options include FEA optimized uprights with oversize reinforced bearings for greater strength and less rolling resistance. Full Carbon Fiber floor at 29 lbs., also available.

PRICE \$7,495.00

TEL 503 283 1400 | FAX 503 283 4500 | <http://www.westracecars.com>

2774 North Hayden Island Drive, Portland, OR 97217 USA